

MANT

design Luigi Brembilla

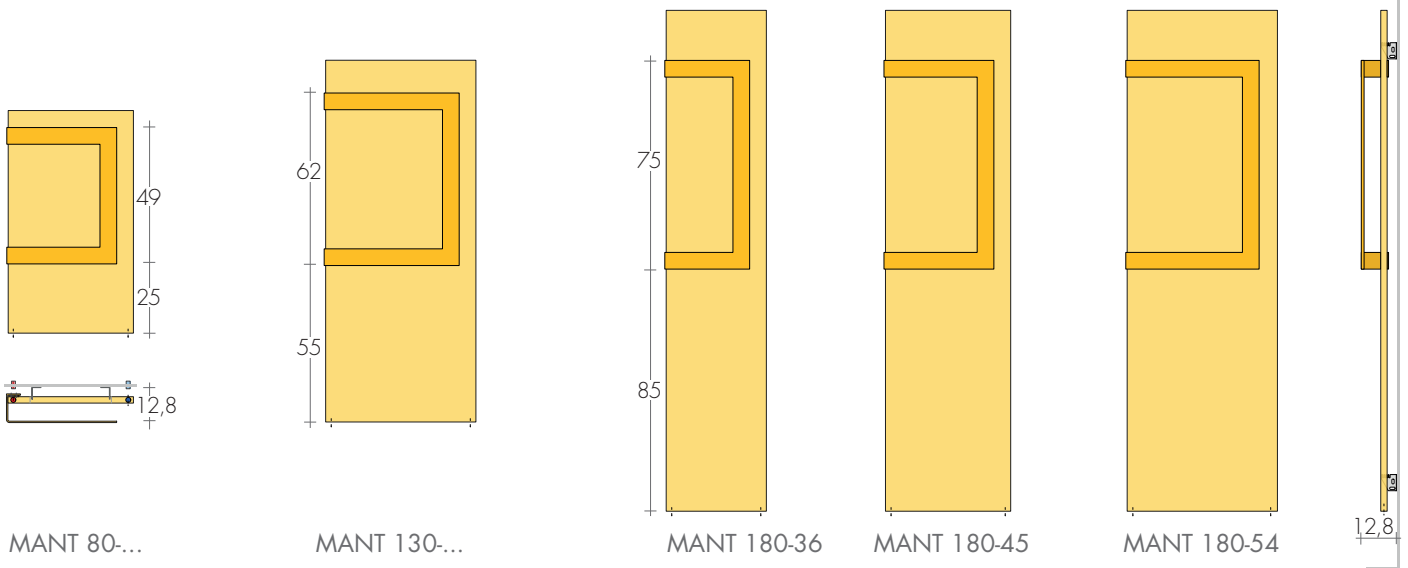
A striking heated radiator, from the essential lines with a thin panel (just 2.3 cm thick)

with a practical double towel rails open on three sides.

On request, the towel rails can be painted in a BREM different colour from the plate.

DIMENSIONS

Widths: 36 / 45 / 54 cm
 Heights: 80 / 130 / 180 cm
 Depth: 9,5 cm
 Depth: from wall 12,8 cm



MANT 80-...

MANT 130-...

MANT 180-36

MANT 180-45

MANT 180-54

12,8

MODEL	H-L cm	EN 442		▲▽ t.c. cm	Height H cm	Width L cm	Weight M Kg	Volume V dm ³
		Δt 50 K watt	Δt 30 K watt					
MANT 80-45	80	399	210	41	80	45	11,3	3,8
MANT 80-54	80	478	251	50	80	54	13,5	4,4
MANT 130-45	130	643	338	41	130	45	18,2	6,0
MANT 130-54	130	770	405	50	130	54	21,8	6,8
MANT 180-36	180	714	376	32	180	36	20,3	7,0
MANT 180-45	180	887	466	41	180	45	25,1	8,1
MANT 180-54	180	1061	558	50	180	54	30,0	9,2
MANT-L 180-45	180	1181	621	41	180	45	34,4	8,1

On request the bar on the right

Ready in stock

Δt 40K = W Δt 50K x 0,755

TOWEL BAR MANT: STANDARD COLORS

- white sablé SB 9016
- quartz grey SB 7039
- jet black SB 9005
- same color ordered with the radiator

In one paintwork to Brem color list different from the radiator extra



Fitting ø 3/8"
STANDARD
(without sleeves)



Fitting ø 1/2"
ON REQUEST
(with sleeves)

STANDARD PRODUCTION

White "sablé" paintwork - white EOS brackets
 Tolerance ± 3mm - Air vent ø 1/8"
 MAXIMUM OPERATING PRESSURE 4 BAR

PRODUCTION ON REQUEST

Paintwork to BREM color list with colored brackets +15/25%
 Electric version e.Mant, page 235

STANDARD FITTING

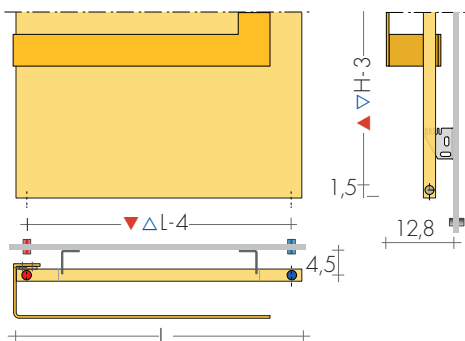
EG ø 3/8"
 Fittings ø 1/2" on request
 Special fittings, page 287



TAPPING CENTRES

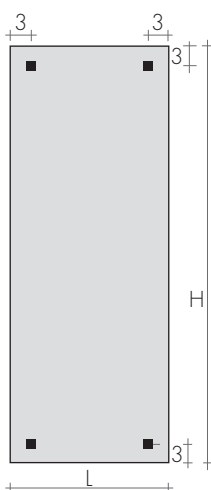
EG vertical fittings as standard
Side fittings on request

Art. AS



TOWEL BAR MANT

L: 30,5 - 39,5 - 48,5 cm



FIXINGS
Brackets included



B35 bracket



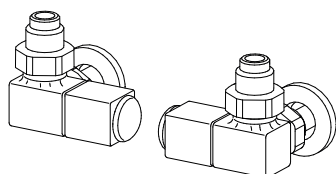
MANT 130-54

RECOMMENDED VALVES

CHROME PLATED VALVES KIT WITH:

- n°2 Valves with O-ring Tangs
- n°2 Fittings (multilayer ø16, copper ø12,14)
- n°2 Round washers

On request: Polished stainless tube cover
(to be cut to right size) Art. CA18

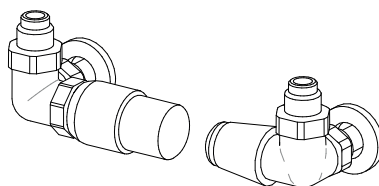


SIDE CONTROL QUADRA VALVE KIT
page 279 Art. KQL

COLORED QUADRA VALVES

page 279

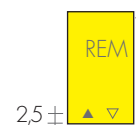
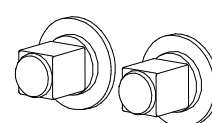
ANGLED MINI VALVES KIT page 278
chrome-plated or white color Art. KMS



SIDE CONTROL TON VALVES KIT with
THERMOSTATIC head Art. KTL

SIDE CONTROL TON VALVES KIT
page 277 Art. KVL

REMOTE FITTINGS Art. REM
at the rear ▲▼ L-5cm



REMOTE VALVES ASSEMBLY KIT p. 281 with:
- n°2 Fittings (multilayer ø16, copper ø12,14)

REMOTE QUADRA VALVES ASSEMBLY KIT
Art. KQG

REMOTE TON VALVES ASSEMBLY KIT with
THERMOSTATIC head Art. KVGT