

RAW

design Davide Diliberto

RAW a particularly iconic product, its curved 25 mm diameter tubes have been

assembled and welded to form box shapes with an attractive diagonal cross in the centre.

Form without form, three dimensional and yet empty, a framework.



**A' DESIGN AWARD
WINNER 2019
GOLD**

DIMENSIONS

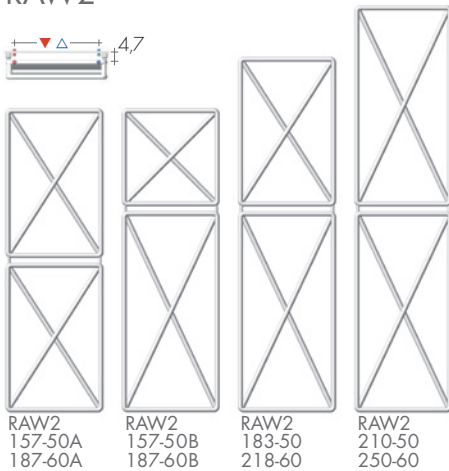
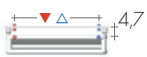
Width : 50/60/77/92/104 cm

Height : 157/183/187/210/218/250 cm

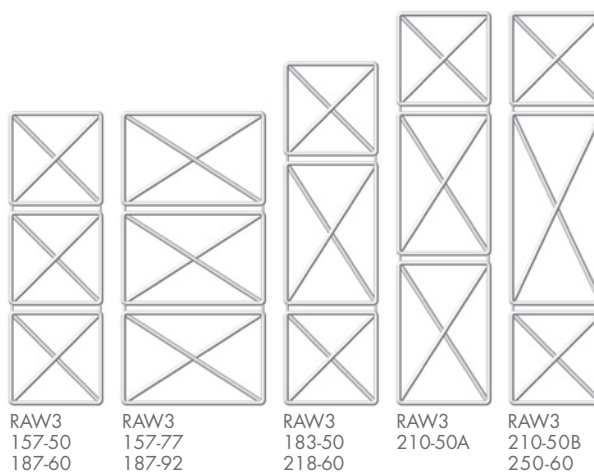
Depth : 10 cm

Depth from wall : 13,5 cm

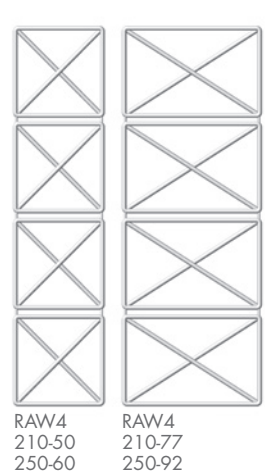
RAW2



RAW3



RAW4



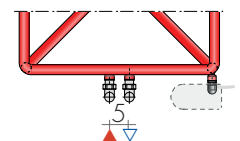
VERTICAL MODELS

	HL cm	EN 442		▲ ▽ t.c. cm	Height H cm	Width L cm	Weight M kg	Volume V dm ³
		Δt 50 K watt	Δt 30 K watt					
MODELS 50								
RAW2	157-50A	712	379	42	156,5	50,5	11,1	5,5
RAW2	157-50B	717	381	42	156,5	50,5	11,1	5,4
RAW2	183-50	782	416	42	183	50,5	12,3	6,0
RAW2	210-50	846	450	42	209,5	50,5	13,5	6,6
RAW3	157-50	868	462	42	156,5	50,5	13,2	6,4
RAW3	157-77	1077	573	68,5	156,5	77	16,6	8,2
RAW3	183-50	938	499	42	183	50,5	14,3	7,0
RAW3	210-50A	1003	534	42	209,5	50,5	15,5	7,6
RAW3	210-50B	1007	536	42	209,5	50,5	15,5	7,6
RAW4	210-50	1159	617	42	209,5	50,5	17,6	8,6
RAW4	210-77	1437	765	68,5	209,5	77	22,2	10,9
MODELS 60								
RAW2	187-60A	850	452	52	186,5	60,5	16,6	6,1
RAW2	187-60B	850	452	52	186,5	60,5	16,6	6,1
RAW2	218-60	932	496	52	218	60,5	18,4	6,7
RAW2	250-60	1009	537	52	249,5	60,5	20,1	7,4
RAW3	187-60	1037	552	52	186,5	60,5	19,8	7,2
RAW3	187-92	1285	684	83,5	186,5	92	24,9	9,1
RAW3	218-60	1120	596	52	218	60,5	21,5	7,8
RAW3	250-60	1197	637	52	249,5	60,5	23,2	8,5
RAW4	250-60	1384	736	52	249,5	60,5	26,4	9,6
RAW4	250-92	1715	912	83,5	249,5	92	33,2	12,2

Other RAW measurements page 194 Ready Stock

(Δt 40K = W Δt 50K x 0,755)

MIXED VERSION*
fittings EG ▲ ▽ 5 cm



STANDARD PRODUCTION

White "sablé" paintwork - white B35 brackets
Tolerance ± 3mm - Air vent ø 1/8"

MAXIMUM OPERATING PRESSURE 8 BAR

PRODUCTION ON REQUEST

Paintwork to BREM color list with
colored B35 brackets

Electric version, e.Raw page 263

STANDARD FITTING EG ø 1/2"

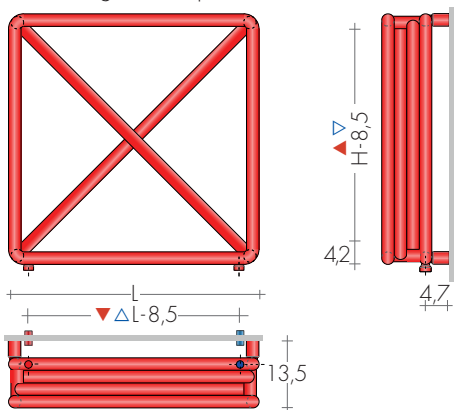
Fittings 3/8" on request
Feet and dividers, on request

Special fittings, page 286



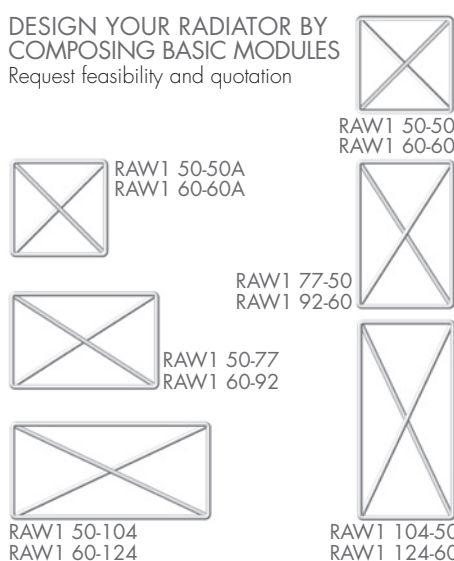
TAPPING CENTRES

EG vertical standard fittings
Side fittings, on request without extra



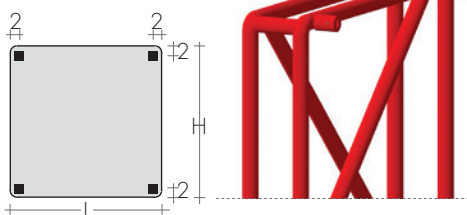
DESIGN YOUR RADIATOR BY COMPOSING BASIC MODULES

Request feasibility and quotation



FIXINGS

Brackets included

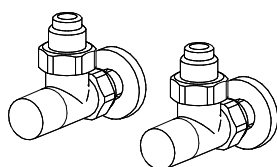


RECOMMENDED VALVES

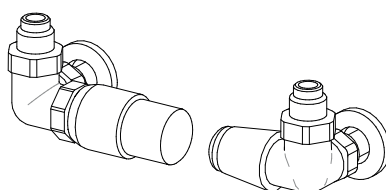
CHROME PLATED VALVES KIT WITH:

- n°2 Valves with O-ring Tangs
- n°2 Fittings (multilayer ø16, copper ø12,14)
- n°2 Round washers

On request: Polished stainless tube cover (to be cut to right size) Art. CA18



ANGLED MINI VALVES KIT
chrome-plated or white color Art. KMS



SIDE CONTROL TON VALVES KIT with THERMOSTATIC head Art. KTL
SIDE CONTROL TON VALVES KIT page 277 Art. KVL



REMOTE VALVES ASSEMBLY KIT p. 281 with:
- n°2 Fittings (multilayer ø16, copper ø12,14)

REMOTE TON VALVES ASSEMBLY KIT Art. KVG

REMOTE TON VALVES ASSEMBLY KIT with THERMOSTATIC head Art. KVGT

